

Our Website



Our Whatsapp



MultiXair®
www.fabricducts.cn

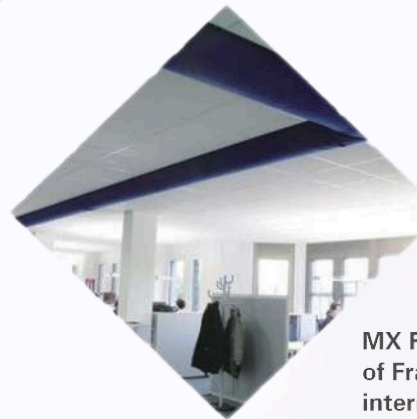
MX Fabric air Distribution System

The world's leading fabric ventilation and distribution system

Mixi (Shanghai) Environmental Technology Co.,Ltd.
Xinmixi (Shanghai) Environmental Control System Co., Ltd.

The registered trademarks of MultiXair®, MX fabric™, Cheageur®, etc. mentioned in this article are owned by Mixi (Shanghai) Environmental Control System Co., Ltd. The information provided in this article is based on the time of printing. The company's changes and adjustments to the product may not appear in the information. The pictures may differ slightly from the actual product. The color and appearance of the product are subject to the actual product.

MultiXair® is headquartered in Roubaix, Lille, France. It is a subsidiary of the French CHEAGEUR Group. It is a leading global supplier of environmental industrial products and fiber fabric ventilation systems. It has 8 joint ventures and 32 sales outlets around the world. For more than 30 years, relying on the advanced textile technology advantages of the parent company CHEAGEUR Group which have provided fabric ventilation system solutions to more than 34,000 customers worldwide.



1982 France BREST launched the first fabric distribution system

1982

1983

The first set of MX FABRIC PE enterprise application in LILLE (Lille)

1992 MX FABRIC was acquired by CHEAGEUR Group

1992

1996

MX FABRIC DUCT was established in Cooi Town (CROIX), Rubesi District, Lille

2002 MX Fabric Duct stepped out of France and entered the international market

2002

2004

Established Klinsk MX FABRIC DUCT .LTD

2007 Established MX FABRIC DUCT .LTD American company

2007

2012

Established MX FABRIC DUCT .LTD Brazil company

2015 Established Multixair (Shanghai) Environmental Technology Co., Ltd. in China

2015

2017

MX FABRIC DUCT brand changed to MULTI XAIR



2018 Established UK MULTI XAIR UK company

2018

2019

China sets up four marketing centers to serve more than 800 customers



2020 Accumulatively provided product systems for global customers over 3.6 million meters

2020



MultiXair® (MX) fabric air distribution system is a flexible air outlet system made of special flame-retardant fibers that replaces air supply pipes, air valves, air outlets or diffusers and insulation materials. Also known as MX fabric duct system.

MultiXair® engineers provide tailor-made system solutions for each user. Widely used in cold chain logistics, food and tobacco, machinery and electronics, light industrial textiles, pharmaceutical storage, shopping malls and supermarkets, sports centers, automobile manufacturing, exhibition, halls, etc.



Accurate and uniform

The air is discharged through the fiber gap of the entire pipe wall or the evenly distributed orifices that is linear air supply along the radial direction of the pipe, and fan air supply in the axial direction to form a three-dimensional air supply, and the air supply range is accurate and the overall air supply is uniform.

Shorten time limit for a project

The installation is simple and convenient even the degree of systemization is extremely high. The site only needs to simply hang and connect with the zipper. The installation period can be shortened to one-fifth of the traditional way.



Reliable quality

The advanced large-scale laser production equipment CFD airflow simulation experiment platform is used to ensure that the products fully meet the needs of the system plan. The product accessories are all internationally renowned brands and the entire system is completed in the factory. The quality is stable and reliable.

Reduce the load

The weight of the MX fabric air distribution system is only 200 ~ 450g/m, using a special suspension device, steel rope or slide rail installation is simple and fast.



Healthy and clean

The entire system is easy to install and disassemble and can be easily maintained and cleaned to maintain high quality air in the system and meet the higher standards of health and cleanliness at the site of use.

Beautiful and high-grade

The entire air distribution system can be fully personalized and customized. There are many colors to choose from, which can provide harmony with any interior style. It is simple, beautiful, and high-grade but not monotonous.

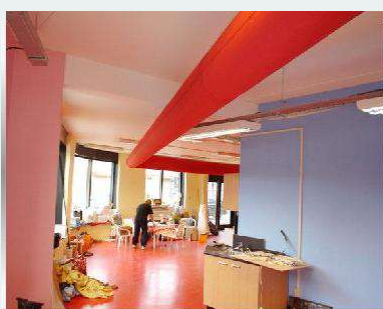
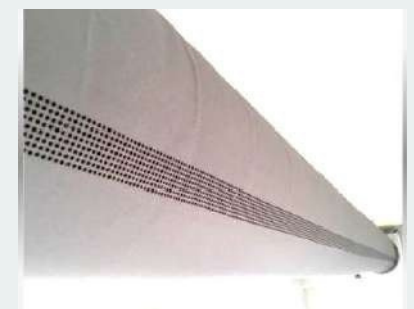


Environmental protection and energy saving

Using natural and environmentally friendly synthetic fibers, the entire manufacturing, installation, use of environmental protection and easy installation and storage can be reused. Accurate and uniform air supply in a large space, efficient equipment operation, and the entire system is more environmentally friendly and energy saving.

Anti-condensation and no insulation

Make full use of the permeability characteristics of the fabric material, penetrate the air through the fiber of the entire pipe wall to form a cold air layer outside the pipe wall so that there is no temperature difference between the inside and outside of the pipe wall, this completely solves the problem of condensation of the pipe, therefore no insulation will be required.



Comfortable and quiet

The whole system is made of flexible material which will not generate or transmit noise, the air supply is consistent, the running wind speed is low, comfortable and quiet, providing good environmental quality.

Economical

The design scheme is simpler than the traditional air duct system, and there is no single product such as air valve, air outlet, and insulation material. The transportation and installation processes are simple and the total cost of the system is saved by 30-40%.



MultiXair® engineers believe that due to the nature of their production and the characteristics of the process, different industries have different building conditions, different spatial structures, different temperatures and humidity, etc. These factors have a crucial influence on the choice of product materials.

MX fabric™	Q&Cheageur®-S	Q&Cheageur®-G	Q&Cheageur®-C	Q&Cheageur®-L
Fabric parameters	5407520092 Woven (horse Dyed) Twill 100% polyester fiber 170-260g/m	5407520092 high performance coating Polyester fiber (woven short yarn Min) 210-290g/m	Silicone glass fiber (PVC Coated fabric) 235-420g/m	5407520091 woven (piece dyeing) Plain weave 100% poly fiber 120-170g/m
Specificities	Permeable material, GB18401-2010A category, permanently incombustible, grade B1 (s1, d0, t0) fireproof, antibacterial and mildew resistant	Permeability material, GB18401 2010A permanent flame retardant Grade B1 (s1, d0, t0) fireproof, anti-bacterial and anti-mildew treatment; anti-static electricity	Non-permeable material GB184012010B category, grade AB fireproof protection, Water and oil resistant treatment	Non-permeable material GB184012010B category, grade AB fireproof protection, Water and oil resistant treatment
Application range				
Food processing	✓	✓		
Industrial production	✓		✓	✓
Logistics warehousing /cold chain	✓	✓		✓
Shopping center	✓			
Public building	✓	✓	✓	
Cleanroom/Lab	✓	✓		
Modern agriculture	✓			✓

Product Series

S series

S series fabric material performance

- **Combustion performance:** Grade B1 (s1, d0, t0) is fireproof, permanently inflammable, non-melting and non-dropping, and the toxicity of smoke production reaches Grade ZA1.
- **Breathability:** permeable material, with 80 standard air permeability (1-40mm/s; 125Pa), to meet the needs of different places.
- **Washable:** It can be cleaned more than 50 times, without flocculent fabric precipitates.
- **Anti-condensation:** Patented design, air guide on fabric, minimal heat and cold load loss, no condensation.
- **Regular weight:** 210gsm-360gsm.
- **Executive standard:** ENISO11611、EN ISO11612、IEC61482-1-2、GB/T5453-1997、GB8624-2012.

S series fabric material performance

Model	Form of wind	Thickness mm	Weight g/m²	Shrinkage	Fire certification	Corrosion resistance	Anti-condensation	Shape	Colour
S-0	Fabric penetration	0.21-0.47	200-275	±0.2%	B	Yes	Yes	5shapes available	Color card optional
S-1	Net scattering	0.21-0.47	210-310	±0.2%	B	Yes	Yes	5shapes available	Color card optional
S-2	Outlet orifice	0.21-0.47	200-290	±0.2%	B	Yes	Yes	5shapes available	Color card optional
S-3	Directional nozzle	0.21-0.47	280-320	±0.2%	B	Yes	Yes	5shapes available	Color card optional
S-4	Jet nozzle	0.21-0.47	280-360	±0.2%	B	Yes	Yes	5shapes available	Color card optional

N series

N series fabric material performance

- **Combustion performance:** Grade A/B fireproof, permanently incombustible, A-grade non-combustible materials can be provided.
- **Breathability:** non-permeable material, breathability rate is 0.
- **Washable:** It can be cleaned more than 50 times, without flocculent fabric precipitates.
- High strength, high toughness, excellent anti-friction performance.
- **Regular weight:** 320gsm、280gsm、260gsm、235gsm.
- **Executive standard:** ENISO11611、EN ISO11612、IEC61482-1-2.

N series air distribution system specifications and models

Model	Form of wind	Thickness mm	Weight g/m²	Shrinkage	Fire certification	Corrosion resistance	Anti-condensation	Shape	Colour
N-1	Net scattering	0.25-0.47	235-275	±0.2%	A/B	Yes	No	4shapes available	Color card optional
N-2	Outlet orifice	0.25-0.47	265-310	±0.2%	A/B	Yes	No	4shapes available	Color card optional
N-3	Directional nozzle	0.25-0.47	260-320	±0.2%	A/B	Yes	No	4shapes available	Color card optional

P series

P series fabric material performance

- **Combustion performance:** Grade B fireproof, permanently flame-retardant, non-melting and dripping, non-toxic combustion.
- **Breathability:** It has a variety of ventilation rates to meet the needs of different places.
- **Washable:** can be cleaned more than 50 times without any fabric deposit.
- **Filtration:** The pore size of the air outlet surface is consistent with the particle size of the high-efficiency filter, and the penetration purification function is enhanced.
- **Anti-bacterial and anti-mildew:** the product is treated with anti-mildew coating, and the antibacterial rate is ≥99%.
- **Antistatic:** The surface of the product can be antistatic to reduce dust adhesion.
- **Anti-condensation:** Patented design, air guide on fabric surface, minimal heat and cold load loss, no condensation.
- **Regular weight:** 310gsm、290gsm、270gsm.
- **Executive standard:** ENISO11611、EN ISO11612、IEC61482-1-2、Er1149-3.

P series air distribution system specifications and models

Model	Form of wind	Thickness mm	Weight g/m²	Shrinkage	Fire certification	Corrosion resistance	Anti-condensation	Shape	Colour
P-0	Fabric penetration	0.21-0.47	270-290	±0.2%	B	Yes	Yes	4shapes available	Color card optional
P-1	Net scattering	0.21-0.47	270-310	±0.2%	B	Yes	Yes	4shapes available	Color card optional

O series

O series fabric air distribution system, the support structure is added to the system, the system will remain circular when not blowing, so it will be more practical and high-grade to meet the customer's appearance requirements.

O series fabric material performance

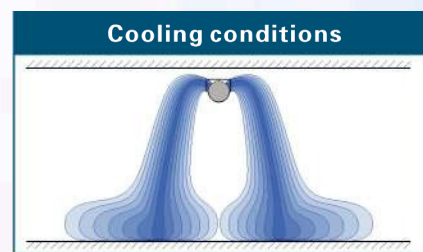
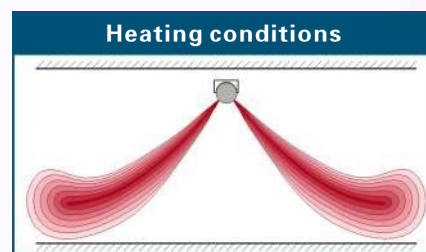
- **Combustion performance:** Grade B1 (s1, d0, t0) is fireproof, permanently inflammable, non-melting and non-dropping, and the toxicity of smoke production reaches Grade ZA1.
- **Breathability:** Permeable material, with 80 kinds of standard air permeability (1-40mm/s; 125Pa), to meet the needs of different places.
- **Washable:** it can be cleaned more than 50 times without any lint of fabric.
- **Anti-condensation:** Patented design, air guide on fabric, minimal heat and cold load loss, no condensation.
- **Regular weight:** 280gsm-450gsm.
- **Executive standard:** ENISO11611、ENISO11612、IEC61482-1-2、GB/T5453-1997、GB8624-2012.

O series fabric material performance

Model	Form of wind	Thickness mm	Weight g/m ²	Shrinkage	Fire certification	Corrosion resistance	Anti-condensation	Shape	Colour
O-1	Net scattering	0.25-0.47	280-330	±0.2%	B	Yes	Yes	5shapes available	Color card optional
O-2	Outlet orifice	0.25-0.47	280-310	±0.2%	B	Yes	Yes	5shapes available	Color card optional
O-3	Directional nozzle	0.25-0.47	320-430	±0.2%	B	Yes	Yes	5shapes available	Color card optional
O-4	Jet nozzle	0.25-0.47	320-450	±0.2%	B	Yes	Yes	5shapes available	Color card optional

D series

A fiber fabric air duct suitable for cold and warm working conditions which solves the problem that the hot air infiltrated in the process of using the permeable material fabric air duct to transport the warm air will be suspended in the upper part of the conveyed space, the problem of heat loss and the transportation of cold air and the design problem of the angle of the wind in the hot air.



D series fabric material performance

- **Combustion performance:** Grade B1 (s1, d0, t0) is fireproof, permanently inflammable, non-melting and non-dropping, and the toxicity of smoke production reaches Grade ZA1.
- **Breathability:** Permeable material, with 80 kinds of standard air permeability (1-40mm/s; 125Pa), to meet the needs of different places.
- **Anti-condensation:** Patented design, air guide on fabric, minimal heat and cold load loss, no condensation.
- **Regular weight:** 270gsm-360gsm.
- **Executive standard:** ENISO11611、ENISO11612、IEC61482-1-2、GB/T5453-1997、GB8624-2012.

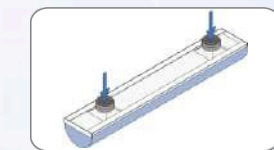
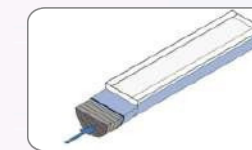
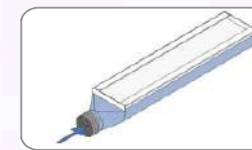
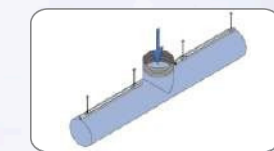
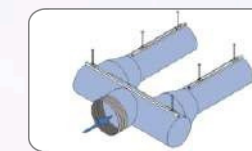
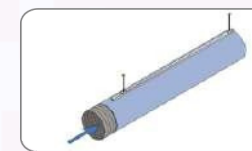
D series fabric material performance

Model	Form of wind	Thickness mm	Weight g/m ²	Shrinkage	Fire certification	Corrosion resistance	Anti-condensation	Shape	Colour
D-1	Net scattering	0.25-0.51	270-315	±0.2%	B	Yes	Yes	5shapes available	Color card optional
D-2	Outlet orifice	0.25-0.51	270-330	±0.2%	B	Yes	Yes	5shapes available	Color card optional
D-3	Directional nozzle	0.25-0.51	270-330	±0.2%	B	Yes	Yes	5shapes available	Color card optional
D-4	Jet nozzle	0.25-0.51	280-360	±0.2%	B	Yes	Yes	5shapes available	Color card optional

Application selection of MX fabric air distribution system

1.Shape category

O	Round		Standard shape, easy maintenance, customer's first choice
D	Semicircular		Used in places where circular ducts cannot be installed due to space restrictions or for aesthetic requirements
Q	1/4 round		Used in places where round air ducts cannot be installed due to space restrictions or for aesthetic requirements or need to be installed in corners
R	Rectangle		Used in places where the height of the space is not enough to install semi-circular air ducts
T	Oval		Used in places where circular ducts cannot be installed due to space restrictions or for aesthetic requirements

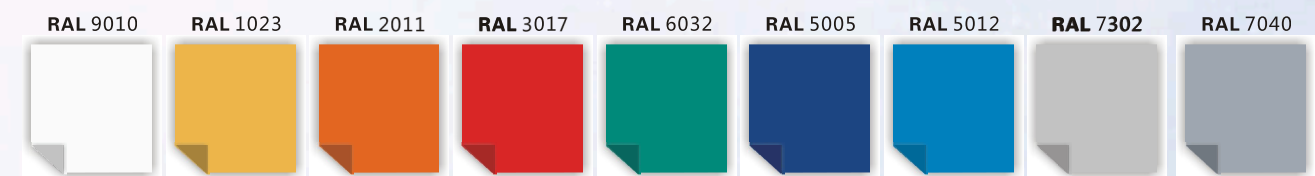


2.Shape and size selection table

Shape	Size	length
Round-O	152.203.254.305.356.406.....1676.1727.1778.1829	The actual needs of customers
Semicircle-D	152.203.254.305.356.406.....1422.1473.1524.1575	The actual needs of customers
1/4 round-Q	152.203.254.305.356.406.....1422.1473.1524.1575	The actual needs of customers
Rectangle-R	152.203.254.305.356.406.....1422.1473.1524.1575	The actual needs of customers
Oval-T	(559.610.660.710.....3200.3404.3708)×(559.610.660.710.....1524)	The actual needs of customers

Note: The diameter of the MX fabric air distribution system is in inches, and 6"-72" (152-1829mm) every 2 inches is a specification.

3.Fiber and color

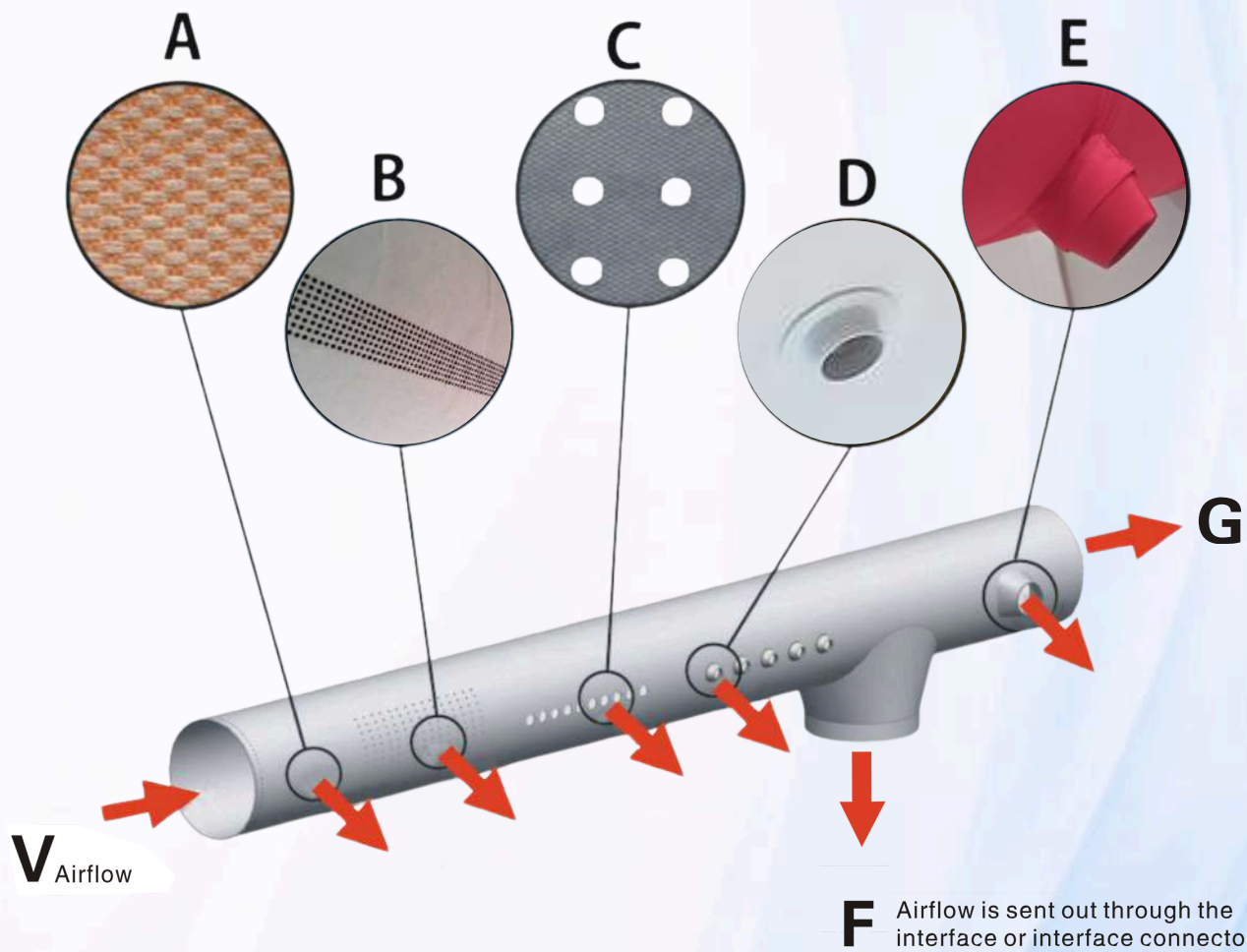


Note: The color is subject to the actual fiber color card

4. Air supply mode selection

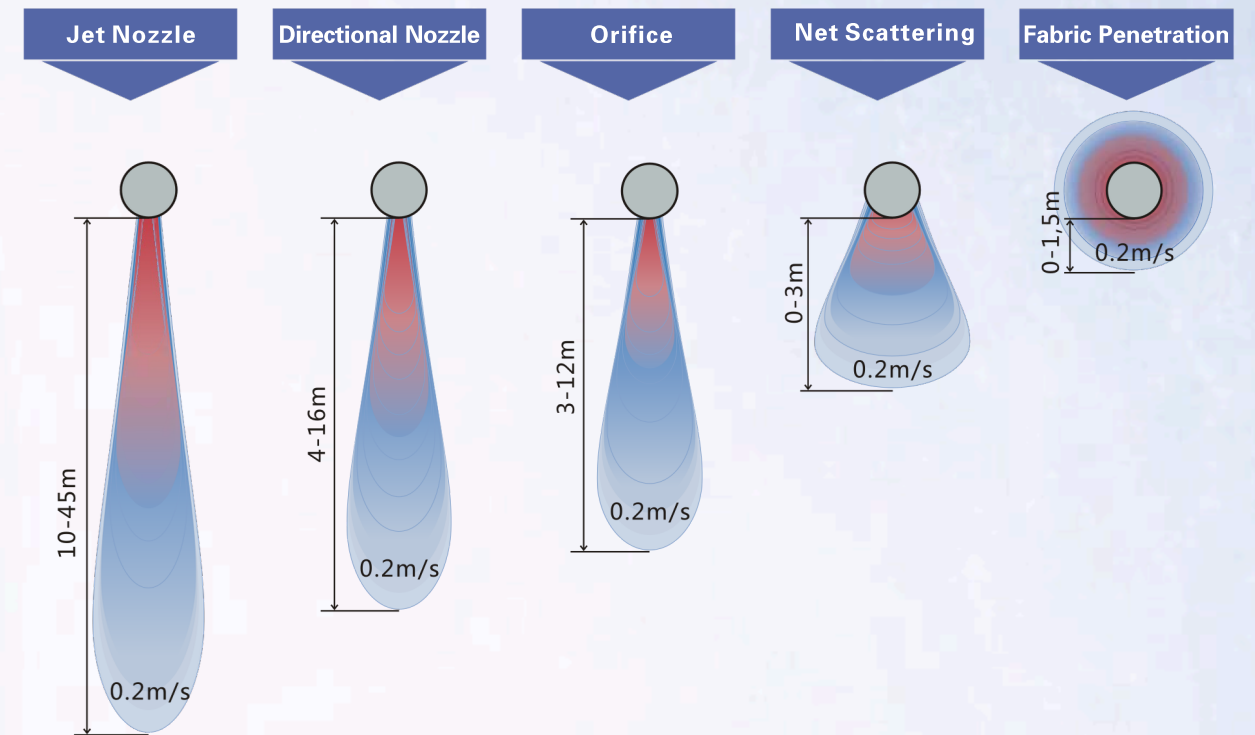
Assuming that the airflow V in the figure below enters the fabric air distribution system through the end of the air pipe or the air port connector, the air can be sent in any of the following ways:

- A. Permeable air supply through breathable fabric.
- B. Scatter the air through the net (the 0.5 or 1.0 mm extremely small hole punched out by the laser punching machine).
- C. Supply air through the orifice (small holes or rows of holes larger than 4 mm that are burned out by the laser punching machine).
- D. Supply air through directional nozzle
- E. Supply air through jet nozzle
- F. Supply air through the interface or interface connector (air flow is transferred to another system or space)

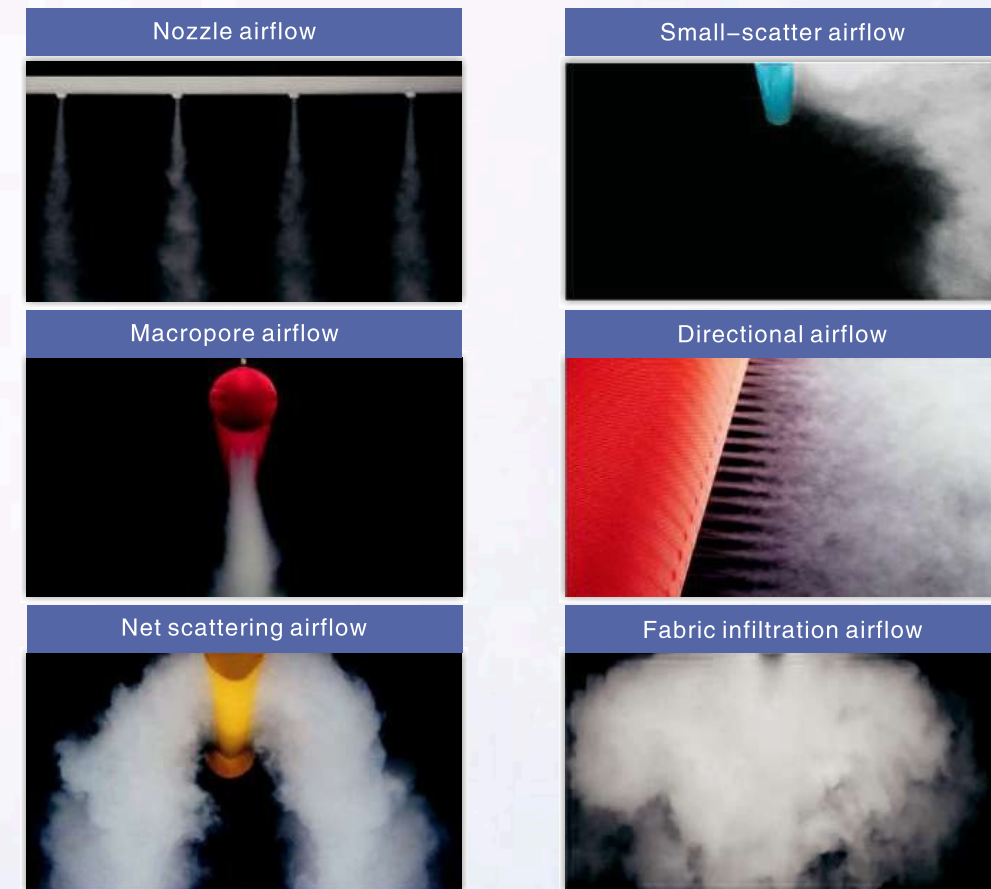


This is a formula that is always correct:
 $V = A + B + C + D + E + F + G$
 (Any value of A, B, C, D, E, F, G can be zero)

Air supply distance



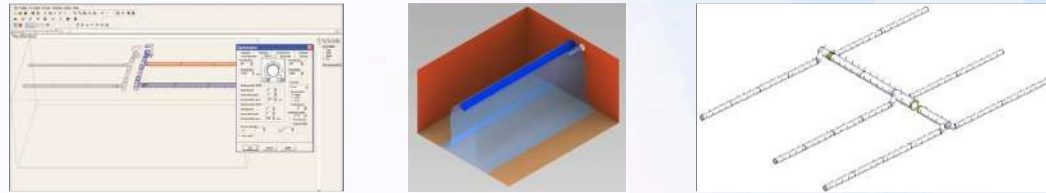
Airflow simulation



5. Airflow design and experimental simulation

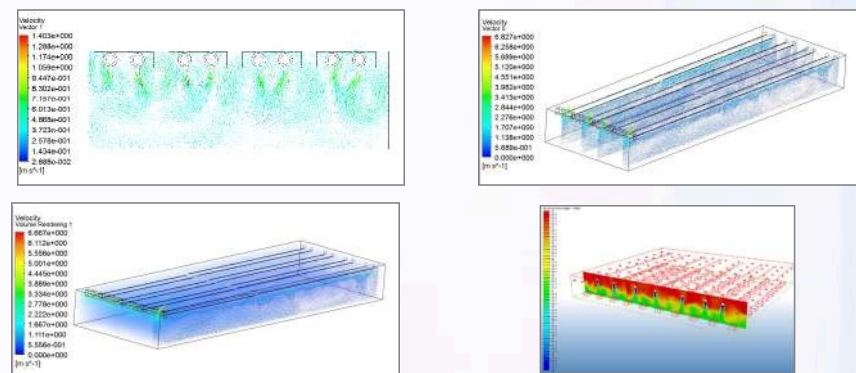
Airflow design

MultiXair® has the international advanced MXD air duct design software, combined with its core technology in the field of ventilation and more than 30 years of design experience to save customer engineers trivial design work, MXD automatic design software makes engineering design more accurate and fast.



CFD airflow simulation

We have a senior technical team that can use CFD to simulate the airflow structure in the space according to the different needs of customers and simulate the distribution of the velocity field and temperature field of the airflow in the room and the pipeline thus verifying the precise of the perfect airflow design, the purpose is to provide customers with the best air distribution and ventilation solutions.



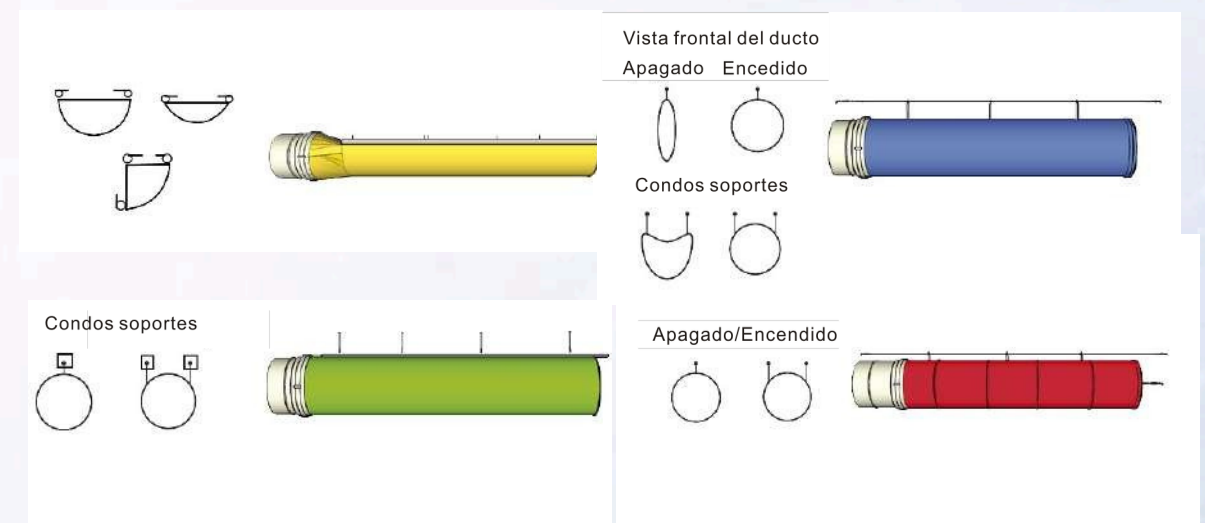
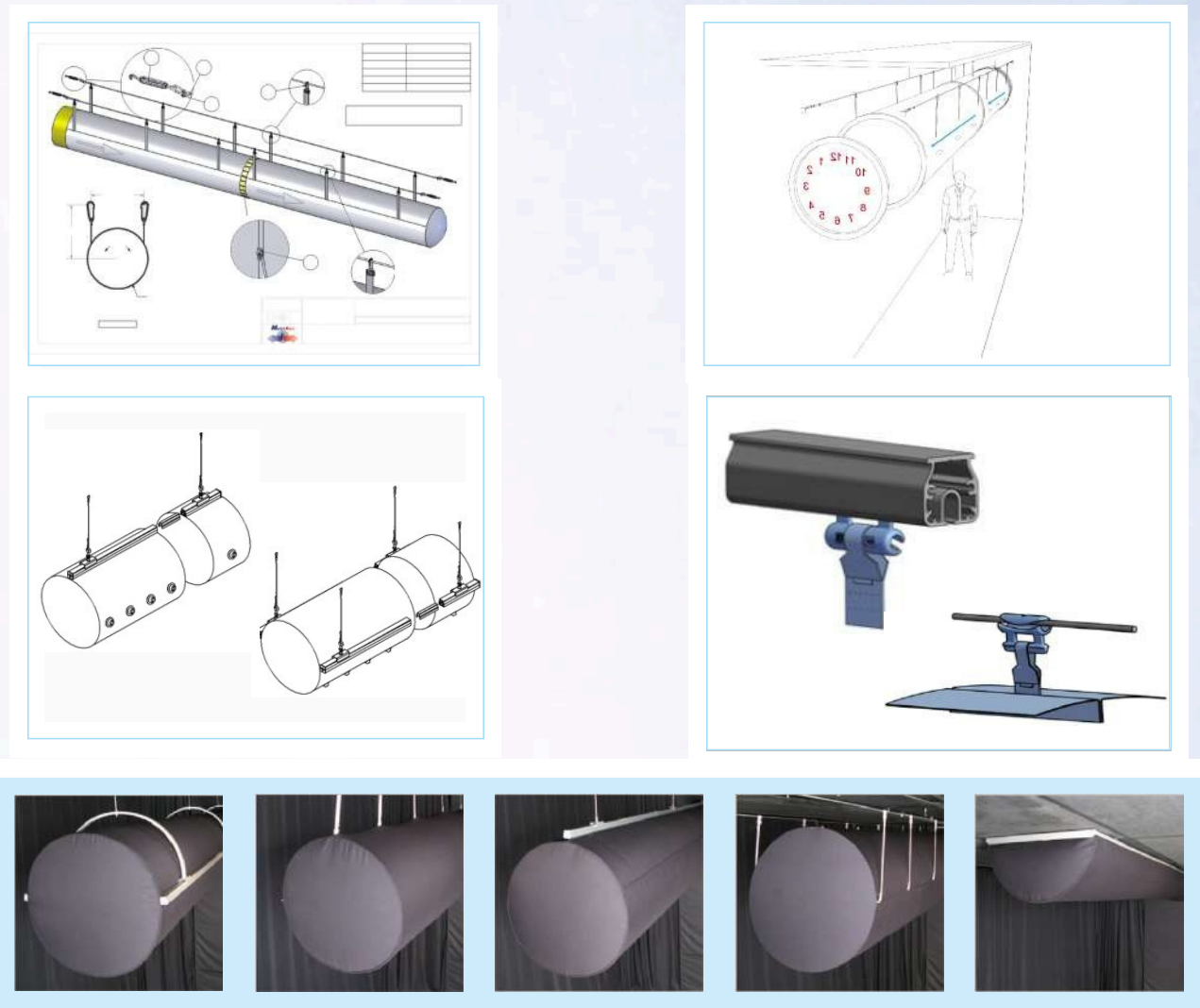
6. Production and installation

The MX fabric air distribution system is processed by the world's advanced Multi-head laser cutting machine which makes the production of MX products reach the international top standard.



Each section of tubing is connected to the next section by an industrial zipper to form the entire section of pipe which is then stretched to the corresponding position on the suspension system. The MX fabric air distribution system can be installed quickly and can be completed on a ladder or elevator. The MX fabric air distribution system is customized and equipped with a suitable suspension system. No additional equipment is needed for the cutting or adjustment to the system.

7. Suspension system



Design and Application of MX Fabric Air Distribution System

The design of the MX fabric air distribution system is not essentially different from the traditional air duct system. Designers can arrange the design according to the design guidelines and they can also hand over to the MX Engineering Technology Center for design services.

Before designing the MX air distribution system, customers are required to fill out the preliminary design parameter table. The table lists important engineering data to facilitate the selection of different products in the early design stage. This purpose is to design the best solution. The preliminary design parameter table is only regarded as a criterion and additional reference support.

Preliminary design parameter table	
Project name:	Date:
Informant:	
Required field	Air conditioning method: cooling () heating () ventilation () cooling and heating dual system ()
	Room type: ceiling type () open type ()
	Room use: Production workshop () playground () supermarket () Office () Catering () Others ()
	Number and location of air handling units: () Whether the location of the unit has been determined ()
	The inlet parameters required by the design duct: air volume () air pressure () cooling capacity ()
	Maximum allowable wind speed in working area: ()m/s
	The area of the air supply area (length x width) responsible for the design duct: ()m x ()m
	The space range occupied by the design duct: ()m ~ ()m
	Room size: length () meters width () meters height () meters
	Required field
Return air form: upper return air () lower return air () side return air ()	
Remarks	Please provide the floor plan, elevation and section of the architectural design that will be involved (including the installation location of the air handling unit in the picture). For special projects, please provide specific detailed parameters. Based on the drawings and the above parameters, we will provide a preliminary plan for the system within 3 working days.

Design 1: Planning and layout of distributed system

The layout of the MX fabric air distribution system is mainly used in the cooling and air conditioning air supply duct system. It is arranged according to the requirements of the site building structure and the location of the unit in the design paper, air conditioning height, air supply area, aesthetics and coordination, etc. It can be arranged as the main duct or it can be used in conjunction with the traditional air duct for the distribution of the end of the branch pipe.

With MXD design software, layout design and drawing operations can be completed more quickly.

Design 2: Design and selection of the shape and size of the distribution system

The inlet wind speed is an important parameter that needs attention in the design process of the MX air distribution system. The inlet wind speed will affect the product vibration, noise generation, system life and air distribution during operation. Generally speaking, the air distribution system works at a wind speed similar to that of traditional air ducts. The maximum achievable wind speed in the pipe depends on the aerodynamic noise of the application. In addition, the unstable airflow in the tube will also cause the fabric tube wall to shake so the wind speed needs to be further controlled within a certain range.

The MX air distribution system determines the diameter based on the air volume and the system inlet wind speed. In the design process, it is necessary to fully consider that the shape, size, and the position and number of inlets are also affected by the choice of system diameter.

Note: G refers to the air supply volume of a single air distribution system (m³/h) V- system inlet wind speed, generally 6-10m/s

D is the diameter of the air distribution system (mm)

In order to ensure that the MX air distribution system avoids the occurrence of jitter and other phenomena and at the same time consider the noise and negative pressure caused by excessive wind speed, the MX air distribution system inlet wind speed should be designed according to the recommended reference value.

Diameter		Inlet Velocity									
		1000 fpm	5.1 m/s	1200 fpm	6.1 m/s	1400 fpm	7.1 m/s	1600 fpm	8.1 m/s	2000 fpm	10.2 m/s
inches	mm	CFM	L/sec	CFM	L/sec	CFM	L/sec	CFM	L/sec	CFM	L/sec
8	203	349	165	419	198	489	231	559	264	698	330
10	254	545	257	654	309	764	360	873	412	1091	515
12	305	785	371	942	445	1100	519	1257	593	1571	741
14	356	1069	505	1283	605	1497	706	1710	807	2138	1009
16	406	1396	659	1676	791	1955	923	2234	1054	2793	1318
18	457	1767	834	2121	1001	2474	1168	2827	1335	3534	1668
20	508	2182	1030	2618	1236	3054	1442	3491	1648	4363	2059
22	559	2640	1246	3168	1495	3696	1744	4224	1994	5280	2492
24	610	3142	1483	3770	1779	4398	2076	5027	2373	6283	2966
26	660	3687	1740	4424	2088	5162	2436	5899	2784	7374	3481
28	711	4276	2018	5131	2422	5986	2826	6842	3229	8552	4037
30	762	4909	2317	5890	2780	6872	3244	7854	3707	9817	4634
32	813	5585	2636	6702	3163	7819	3691	8936	4218	11170	5272
34	864	6305	2976	7566	3571	8827	4166	10088	4762	12610	5952
36	914	7069	3336	8482	4004	9896	4671	11310	5338	14137	6673
38	965	7876	3717	9451	4461	11026	5204	12601	5948	15752	7435
40	1016	8727	4119	10472	4943	12217	5767	13963	6590	17453	8238
42	1067	9621	4541	11545	5449	13470	6358	15394	7266	19242	9082
44	1118	10559	4984	12671	5981	14783	6978	16895	7974	21118	9968
46	1168	11541	5447	13849	6537	16157	7626	18466	8716	23082	10895
48	1219	12566	5931	15080	7118	17593	8304	20106	9490	25133	11863
50	1270	13635	6436	16362	7723	19090	9010	21817	10297	27271	12872
52	1321	14748	6961	17698	8353	20647	9745	23597	11138	29496	13922
54	1372	15904	7507	19085	9008	22266	10510	25447	12011	31809	15014
56	1422	17104	8073	20525	9688	23946	11302	27367	12917	34208	16146
58	1473	18348	8660	22017	10392	25687	12124	29356	13856	36696	17320
60	1524	19635	9268	23562	11121	27489	12975	31416	14828	39270	18535
62	1575	20966	9896	25159	11875	29352	13854	33545	15833	41932	19792
64	1626	22340	10545	26808	12653	31276	14762	35744	16871	44680	21089
66	1676	23758	11214	28510	13457	33262	15699	38013	17942	47517	22428
68	1727	25220	11904	30264	14285	35308	16665	40352	19046	50440	23808
70	1778	26725	12614	32070	15137	37415	17660	42761	20183	53451	25229
72	1829	28274	13345	33929	16015	39584	18684	45239	21353	56549	26691
74	1880	29867	14097	35840	16917	41814	19736	47787	22556	59734	28194
76	1930	31503	14870	37804	17843	44104	20817	50405	23791	63006	29739
78	1981	33183	15662	39820	18795	46456	21927	53093	25060	66366	31325
80	2032	34907	16476	41888	19771	48869	23066	55851	26361	69813	32952
82	2083	36674	17310	44008	20772	51343	24234	58678	27696	73347	34620
84	2134	38485	18165	46181	21798	53878	25431	61575	29064	76969	36329

[Import at one end]

Round air distribution system

Suggested parameters
 1a. Maximum inlet air speed 10m/s (Recommendation 6-8m/s)
 1b. Static pressure \geq 2.5X dynamic pressure
 1c. Static pressure minimum 90Pa

D-shaped air distribution system

Suggested parameters
 1a. Maximum inlet air speed 6m/s
 1b. Static pressure \geq 2.5X dynamic pressure
 1c. Static pressure minimum 90Pa

Mesh type circular air distribution system

Suggested parameters
 1a. Maximum inlet air speed 8m/s (Recommendation 6-8m/s)
 1b. Static pressure \geq 2.5X dynamic pressure
 1c. Static pressure minimum 90Pa

Orifice circular air distribution system

Suggested parameters
 1a. Maximum inlet air speed 8m/s (Recommendation 6-8m/s)
 1b. Static pressure \geq 2.5X dynamic pressure
 1c. Static pressure minimum 90Pa

D-shaped air distribution system with branch pipe

Suggested parameters
 1a. Maximum inlet velocity 5m/s
 1b. Static pressure \geq 2.5X dynamic pressure
 1c. Static pressure min 90Pa
 2a. Maximum inlet velocity 6m/s

Round air distribution system with branch pipe

Suggested parameters
 1a. Maximum inlet velocity 8m/s
 1b. Static pressure \geq 2.5X dynamic pressure
 1c. Static pressure min 90Pa
 2a. Maximum inlet velocity 10m/s

[Import in top position]

D-shaped air distribution system

Suggested parameters
 1a. Maximum inlet velocity 4m/s
 1b. Static pressure \geq 2.5X dynamic pressure
 2a. Maximum inlet velocity 6m/s

D-shaped air distribution system with branch pipe

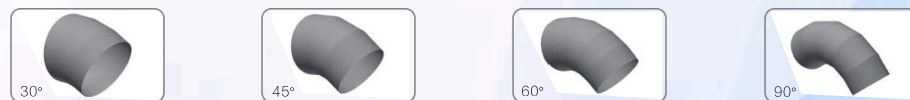
Suggested parameters
 1a. Maximum inlet velocity 4m/s
 1b. Static pressure \geq 2.5X dynamic pressure
 2a. Maximum inlet wind speed 5m/s
 3a. Maximum inlet velocity 6m/s

Design 3: selection design of distributed system components

The MX air distribution system has flexible system design features, so the system provides components made of a variety of fiber materials. All the parts with different diameters are designed by the automatic selection software to ensure the accuracy of the design of the parts. At the same time, it also greatly simplifies the design drawing process and improves the drawing efficiency.

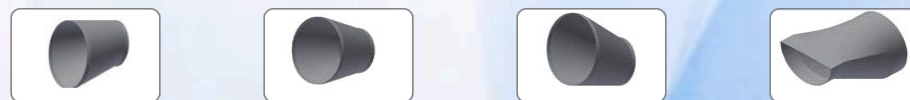
Bends

The bends is made according to the precise angle and there are no restrictions on the angle and size. Different bending angles correspond to different application requirements. According to the angle of the bends, the most commonly used are 30° bends , 45° bends , 60° bends , and 90° bends. The radius of curvature of the round bends is calculated from the center line.



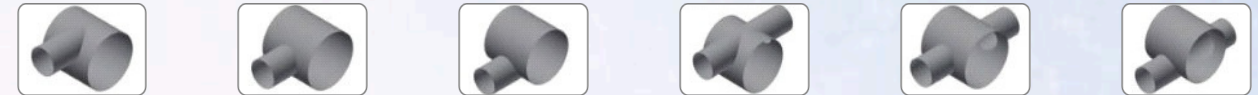
Reducing diameter · conversion catheter

All the reducing and converting ducts are made of fabric. Based on the selected suspension system, determine the appropriate diameter or conversion duct.



Tee · cross

When you use it, the air flow will be sent to the branch pipe perpendicular to the direction of the main pipe. During installation, the tee, cross and the branch pipes are directly connected by industrial zippers.



Design 4: System wind design

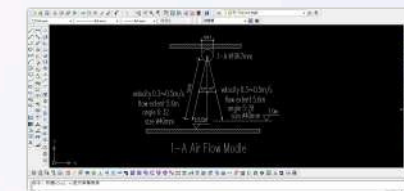
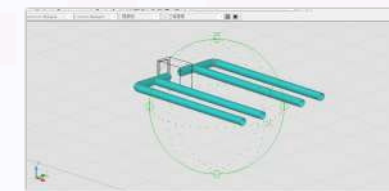
MX air distribution system has independent intellectual property rights for the fabric air duct system intelligent design software-MXD3.0 for detailed design, including the design of fiber permeability, orifice, slit and nozzle selection, size, number and angle, etc. To make the engineering design more precise and faster, this part is designed by MX China Technology Center.

1. Determine the air supply height and air supply area design profile according to the layout of the distribution system and the hanging height

Generally, the center line of two adjacent MX air distribution systems is taken as the boundary of the range according to the principle of average layout. According to the actual engineering situation the scope is divided according to the air volume and plane layout of each air distribution system and the air volume is evenly distributed as much as possible. The height of the comfort zone is the height of the air supply. It is selected according to the needs of the application (refer to the design specifications), and the general air conditioner is 1.5-1.8 meters.

2. Determine the opening direction

According to the divided area, draw the direction of the orifice jet, and select the required number of rows of openings. The orientation of the orifice can be obtained according to the direction of the boundary line and the uniform air supply range.



3. Determine the air volume distribution

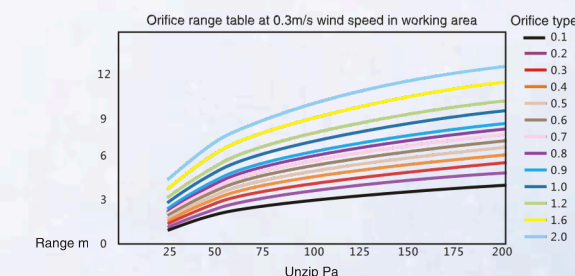
After determining the opening direction, number of rows and control range of each distribution system, the proportion of the amount of air emitted from the orifice can be determined according to the proportion of the area to be covered by each row of orifices and marked on the drawing.

4. Determine the infiltration flow and the opening flow

According to the special requirements of the application site, the MX fabric air distribution system selects a suitable permeability fabric to obtain an appropriate permeability flow rate, and then calculates the opening flow rate according to the total air volume.

5. Determine the size and number of openings

MultiXair® has a patented fiber air distribution calculation system to determine the size and number of rows of holes.



MX quality assurance system

MultiXair(Shanghai) Environmental Technology Co., Ltd. guarantees that the fiber composite insulation duct system marked with MultiXair® (hereinafter referred to as MX product) is a qualified product that has undergone strict quality inspection. Only those who purchase and use the above products through Mainland China (including Hong Kong and Macao Special Administrative Region) through Miltixair (Shanghai) Environmental Technology Co., Ltd. or its authorized distributors will enjoy the corresponding quality assurance and after-sales service. If you have any questions about MX products or services, in order to protect your rights and interests, you can consult Miltixair (Shanghai) Environmental Technology Co., Ltd. in the following ways.

National Service Hotline: 400-836-9929

MX service system

1. Pre-sale service

Introduce product features and applications for customers, and organize professionals to conduct business communication and technical exchanges. Provide technical solutions for fiber composite insulation duct system; provide product performance, features, plan design drawings and detailed parameters in time before and after the project bidding process, and actively cooperate with all aspects of the work to proceed smoothly.

2. Sale service

(1) Product design

The MX fiber composite heat insulation duct system keeps improving in the optimization design of the technical scheme, and cooperates closely with the engineering firm, design institute, Party A, etc. Use the most advanced airflow design MXD3.0 and CFD simulation software to meet the actual needs of the project and ensure the smooth development of the design work.

(2) Manufacturing

process, we do our best to do all stages of work such as drawing review, quality process control, product inspection, packaging and logistics, so that all work in product manufacturing can be carried out in an orderly manner.

(3) Product installation

MX products are sent to the customer's designated location and the company will assign a person to contact the customer to unpack the inventory. Confirm product quantity and quality acceptance. Our company can provide paid installation or technical guidance services to ensure the normal installation and operation quality of the product. At the same time we can provide product technical training, training content includes: product characteristics, installation methods, use requirements, cleaning skills, precautions, etc. The training method is on-site training and the assessment results are recorded and archived. Our company will establish contact with the maintenance personnel and provide long-term technical support in terms of maintenance and ensure that customers can use it normally.

3. After sales service

The company provides a 15-year service life guarantee for all products and the project warranty period is 2 years. If the product has product quality or installation defects during the project warranty period, our company will maintain it free of charge. If it is not a quality problem, it will provide paid services at a cost price.

We are on standby at all times to provide 24/7 hours intimate service, providing each customer with the most timely information, technology and after-sale service to solve all your MX problems until you are satisfied.



Duisburg



Hagen



Hannover



Heidelberg



Warsaw



Brno



Tacuba



azcapotzalco



Jiuzhoutong Group (Anhui) medical stereoscopic warehouse



Henan (Luoyang) Baiyun Chinese herbal medicine cooling warehouse



Beijing Automobile (Zhuzhou) Phase II Huizhuang Workshop



Hangzhou Binjiang District Gymnasium



Sinopharm Group (Zhengzhou) Medical Stereoscopic warehouse



Huarun Guokang (Shanghai) Pharmaceutical Cold Chain Center



JMC light truck assembly workshop



Guangzhou Yuexiu Principality Swimming Hall



Chongqing Huasen Pharmaceutical (Rongchang) Pharmaceutical Cooling warehouse



Shouquanzhai (Ningbo) Medical Cooling Warehouse



Jiangling Automotive Engine Cylinder Head Workshop



Keming Group (Hunan) Swimming Hall



Xiaoyaoyao Group (Jinan) Medicine Cooling Warehouse



China Merchants (Zhengzhou) Pharmaceutical Cooling Library



Haima Automobile (Zhengzhou) Painting Workshop



Wuhan Jinyinhu Stadium



Wuhan Aviation
Headquarters Badminton Hall



Bailu Chemical Fiber
Group (Xinxiang) Factory



Hema Fresh Health Temporary Workshop



Henan Longfeng Leather Cold Storage



Zhengzhou Airport
Smart Phone Industrial Park



Fuanna Group (Nanchong) Factory



KFC (Tianjin) Land,
Road and Port Dry Warehouse



Cold Storage of Commodity Center of
Comprehensive Bonded Zone in Xiangtan City



Paratroopers training camp of a
certain army in Guangxi province



Hengdu Group (Henan) Split Workshop



Marine Harvest Sanweiyu processing workshop



Cold Storage of Agricultural Product
E-commerce Logistics Park in Northern Guiyang



Fujian Wuyi Tobacco
Original Tobacco Warehouse



Anhui Xiehecheng Pharmaceutical Storehouse



Shanghai Yifude Supply
Chain Food Processing workshop



China Supply and Marketing International
Livestock (Taixing) Cold Chain Logistics Park